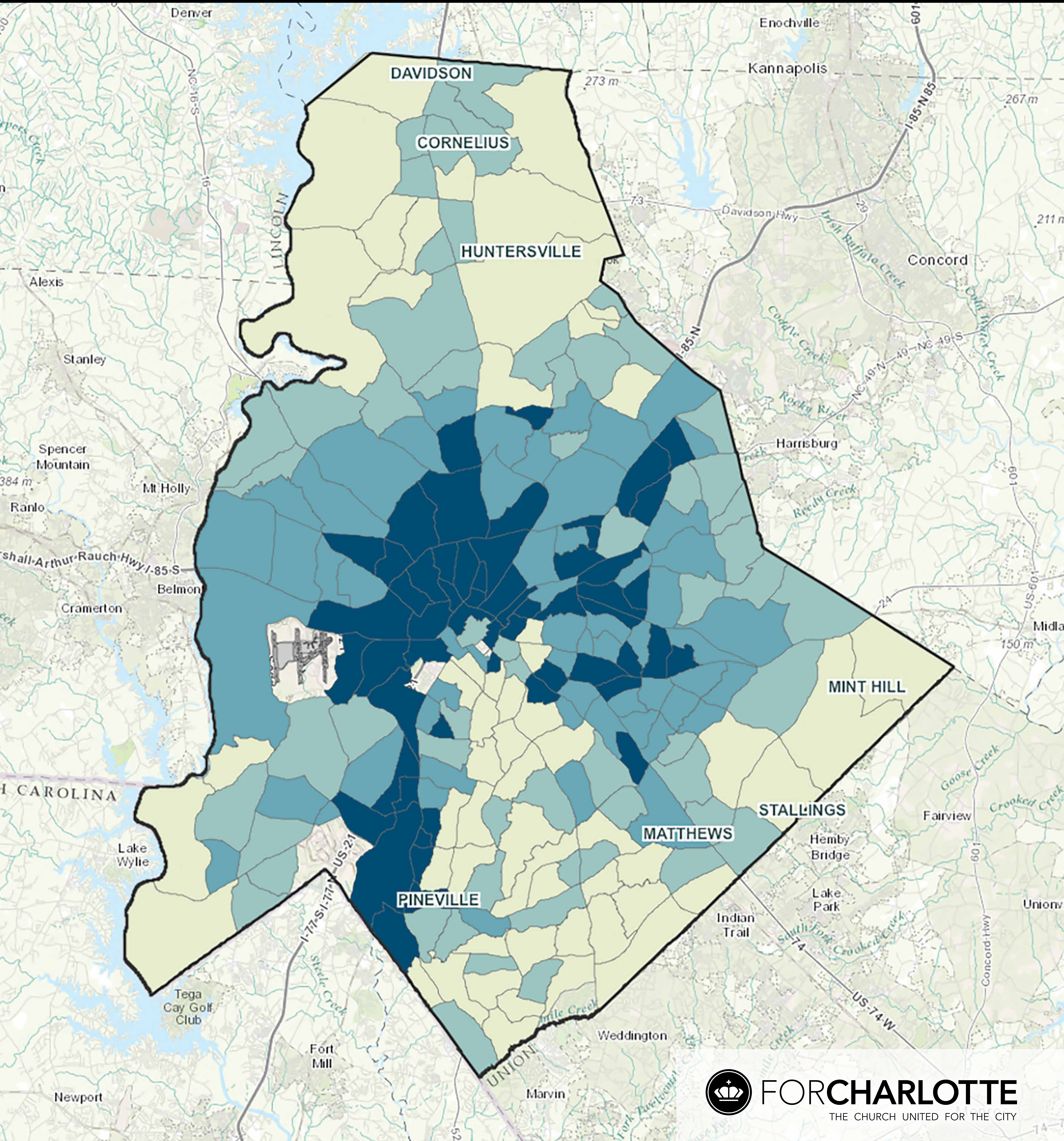


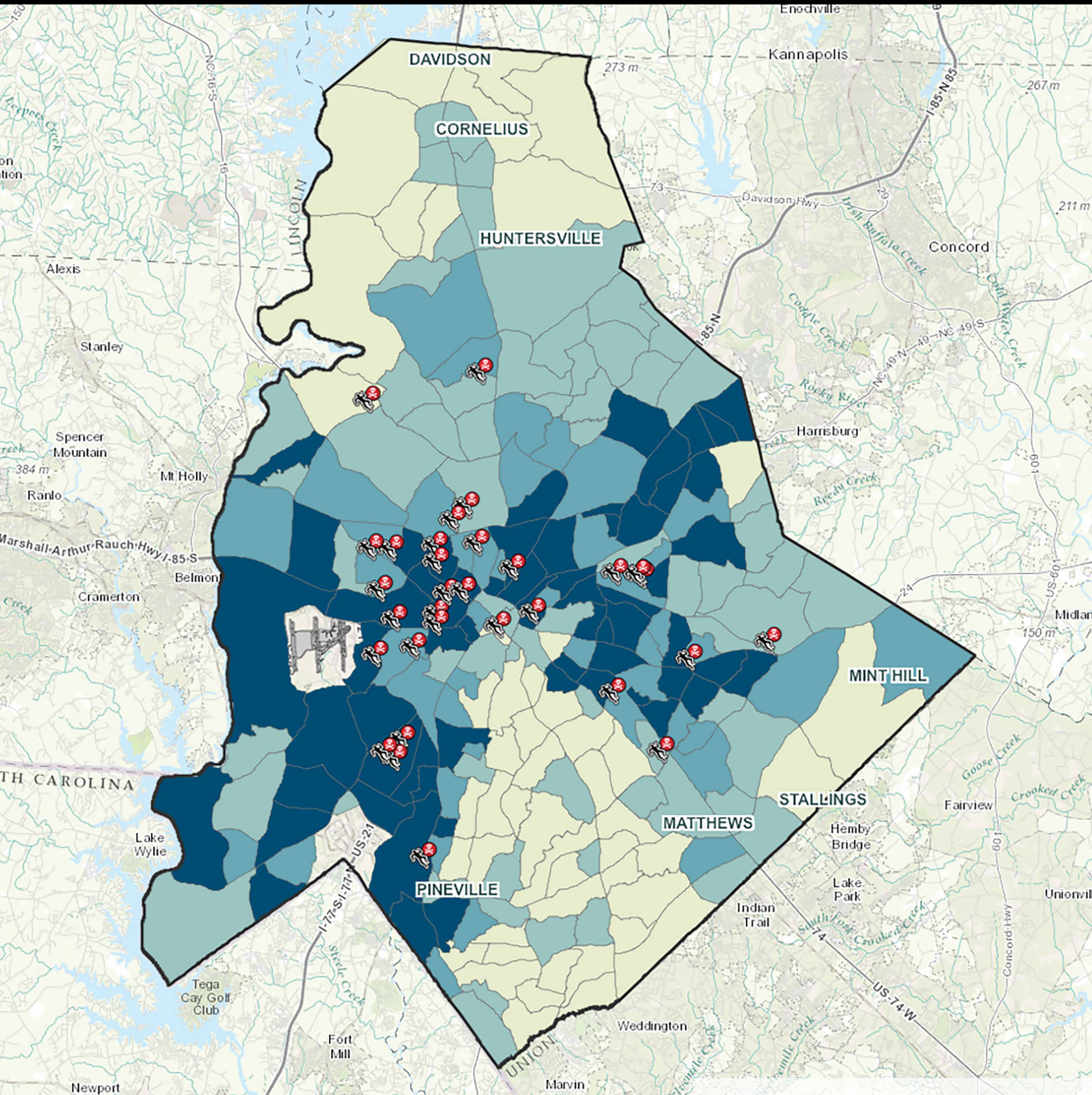
# Charlotte Divided: Family Structure



% Single Parent Families (Census 2010)



# Charlotte Divided: Social Capital



**Charlotte Homicides**  
(Sept 1, 2015 - Mar 25, 2016) (CMPD)

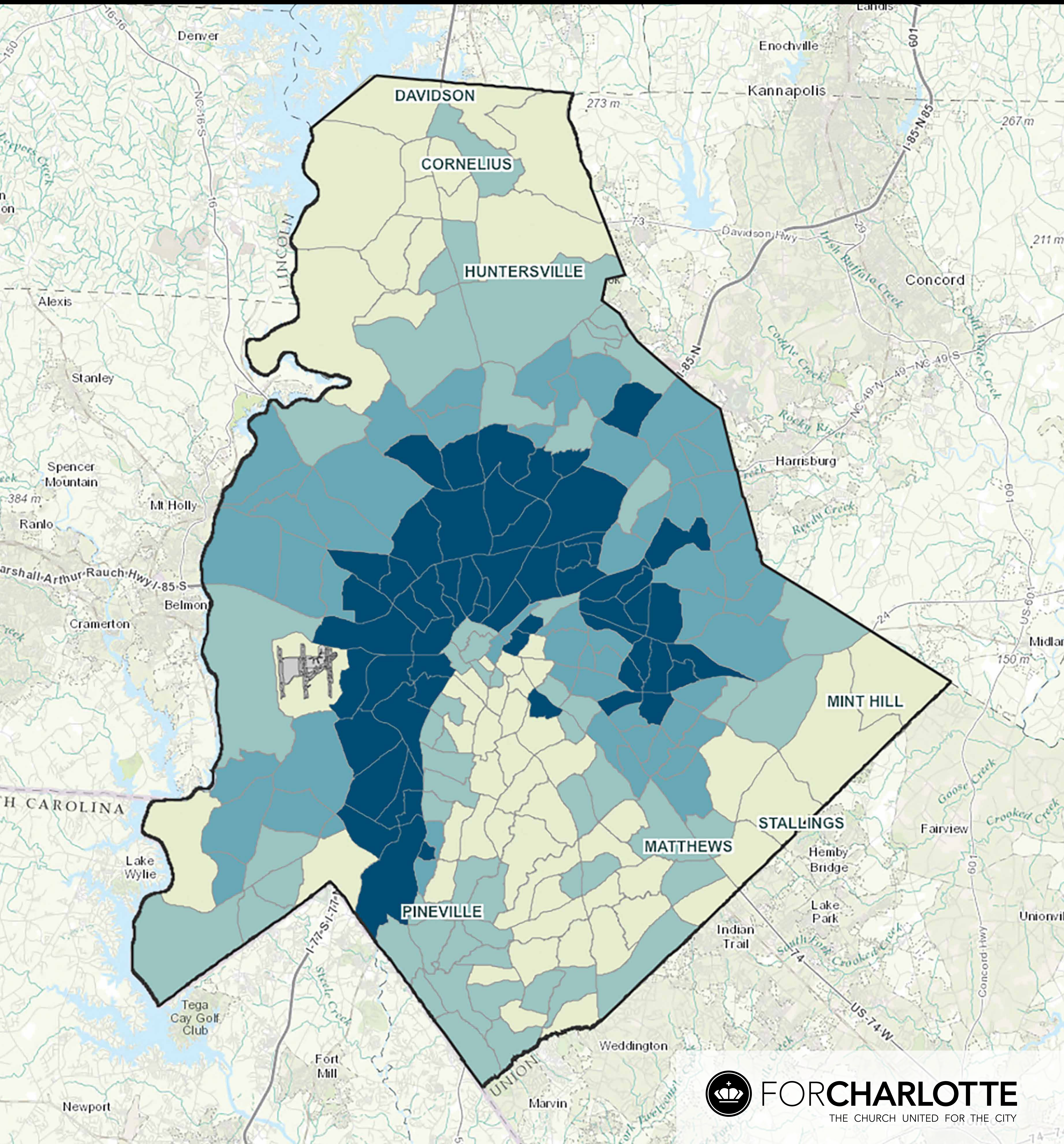


**FOR CHARLOTTE**  
THE CHURCH UNITED FOR THE CITY

**% Voter Participation 2012 Elections** (Charlotte Open Data)



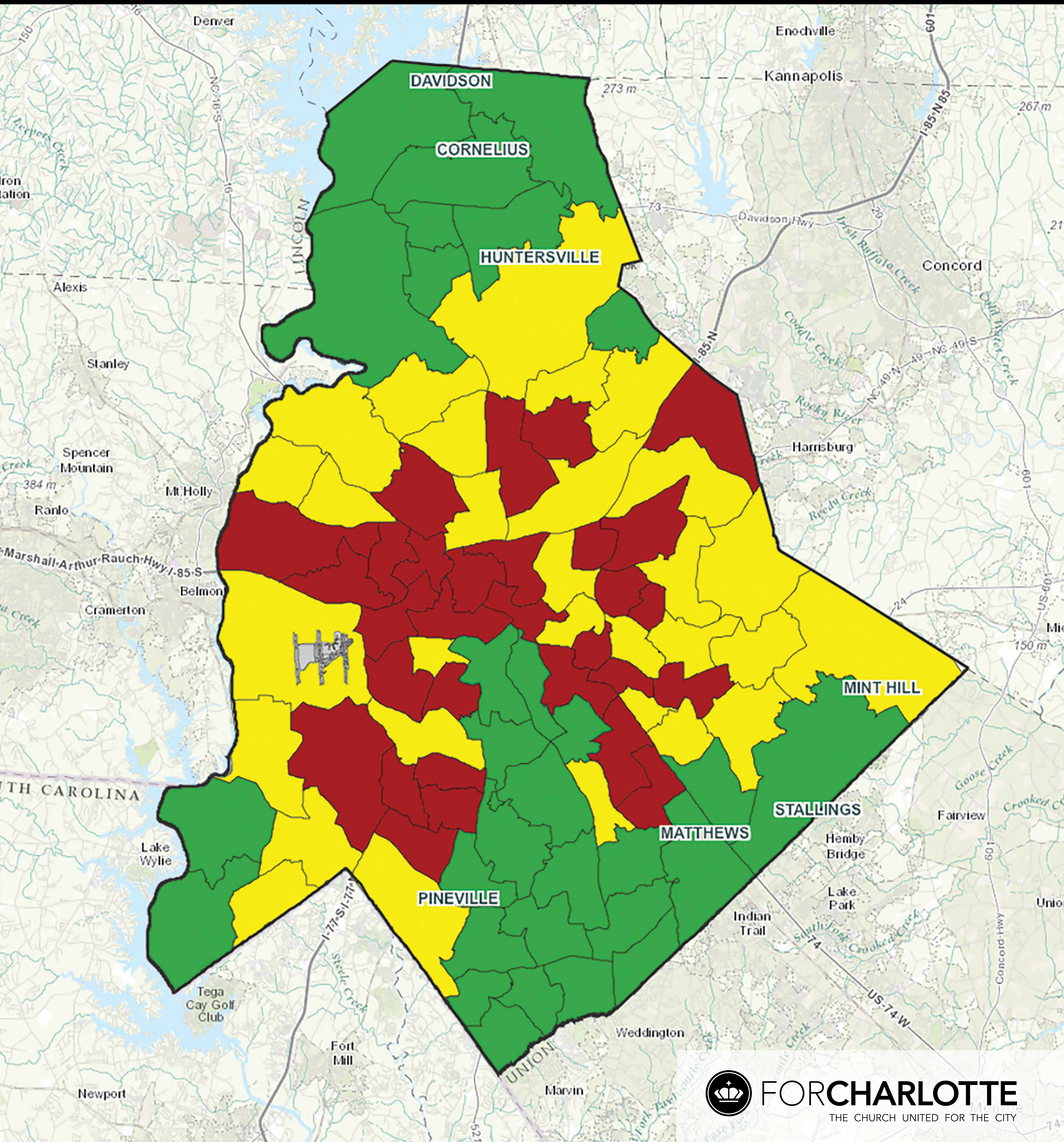
# Charlotte Divided: Race



% Minority Races (Census 2010)



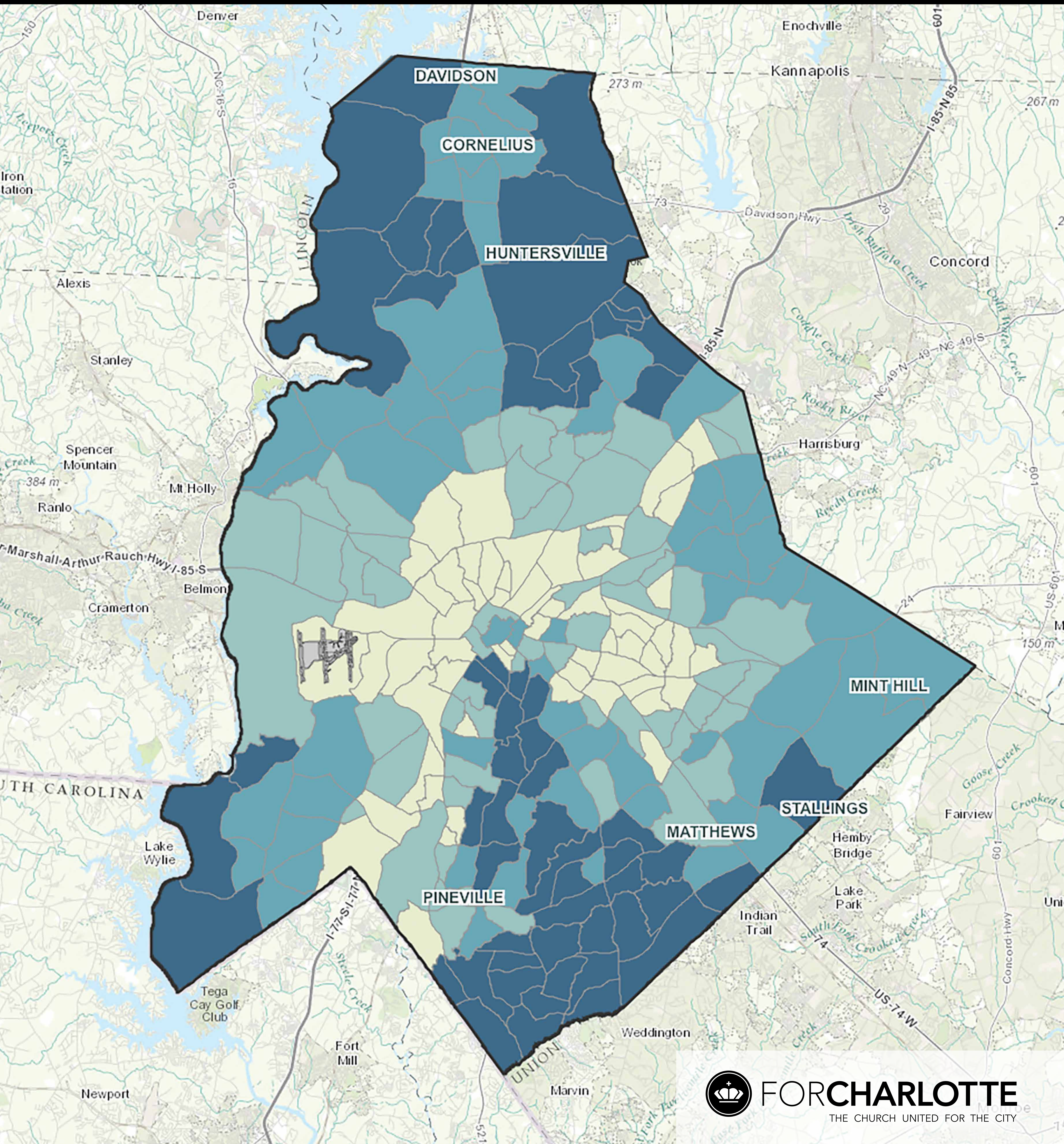
# Charlotte Divided: Education



Elementary School Performance 2014-15 (NC SBE)



# Charlotte Divided: Income and Wealth



 **FOR CHARLOTTE**  
THE CHURCH UNITED FOR THE CITY

2015 Medium Household Income (esri 2015)

